



OPTIMIZED ENGINEERING ASSOCIATES
 400 38TH STREET, SUITE 307
 UNION CITY, NJ 07087
 201-430-9173
 201-866-0913 (FAX)
 E-mail: guy@oea-corp.com
 Web: www.oea-corp.com

DESIGN NOTES

DESIGN METHOD BASED ON NJ RSI STANDARDS:

CALCULATIONS

TOTAL SITE AREA: 2485.5 SF
 PRE-DEVELOPED:
 PRE-BUILDING: 1750 SF
 PERVIOUS AREA: 435 SF
 IMPERVIOUS AREA PATIO: 275 SF

POST DEVELOPMENT

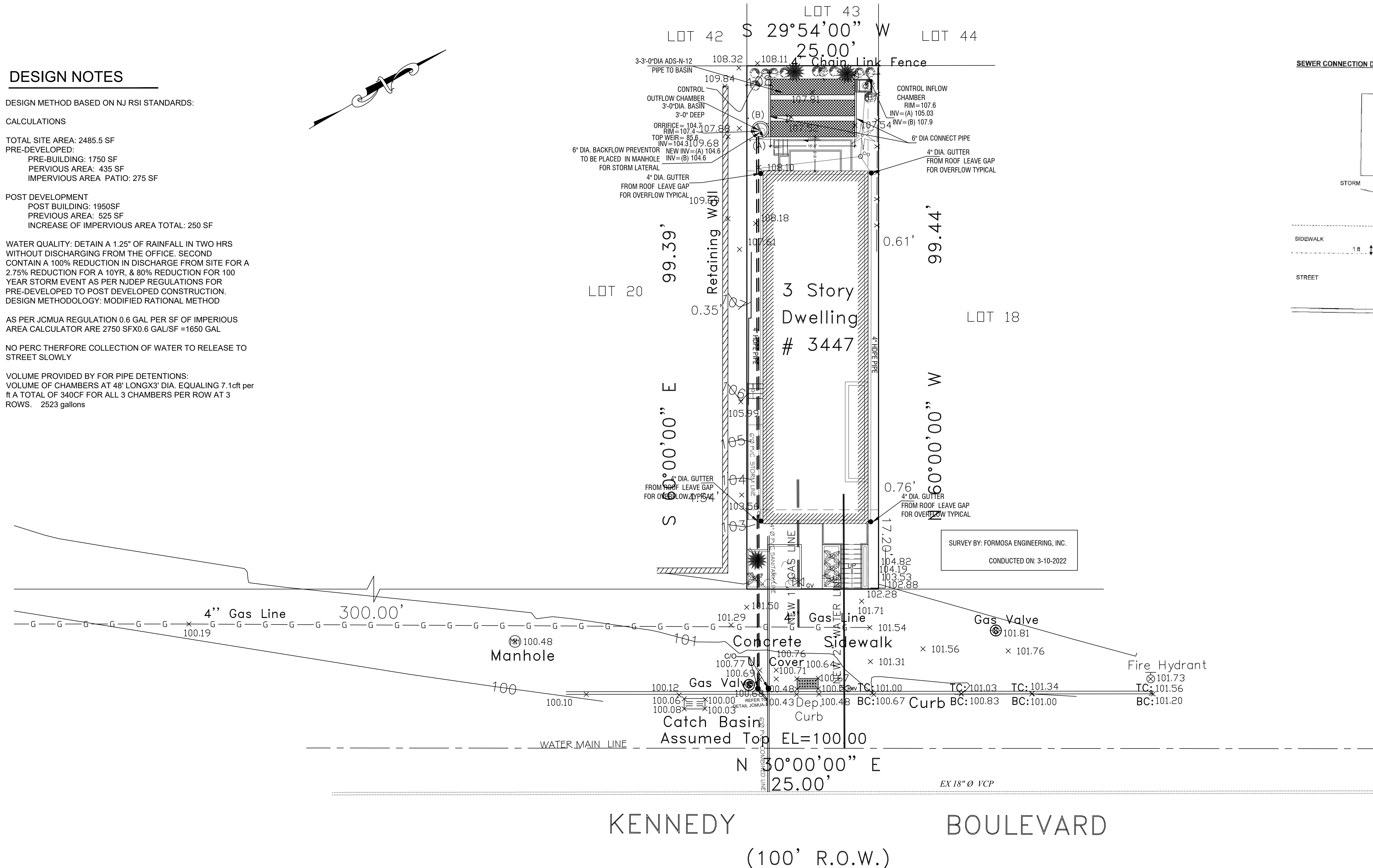
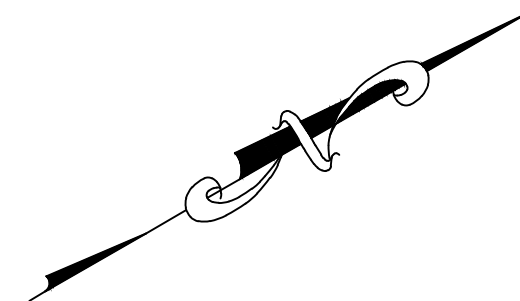
POST BUILDING: 1950SF
 PREVIOUS AREA: 525 SF
 INCREASE OF IMPERVIOUS AREA TOTAL: 250 SF

WATER QUALITY: DETAIN A 1.25" OF RAINFALL IN TWO HRS WITHOUT DISCHARGING FROM THE OFFICE. SECOND CONTAIN A 100% REDUCTION IN DISCHARGE FROM SITE FOR A 2.75% REDUCTION FOR A 10YR. & 80% REDUCTION FOR 100 YEAR STORM EVENT AS PER NJDEP REGULATIONS FOR PRE-DEVELOPED TO POST DEVELOPED CONSTRUCTION. DESIGN METHODOLOGY: MODIFIED RATIONAL METHOD

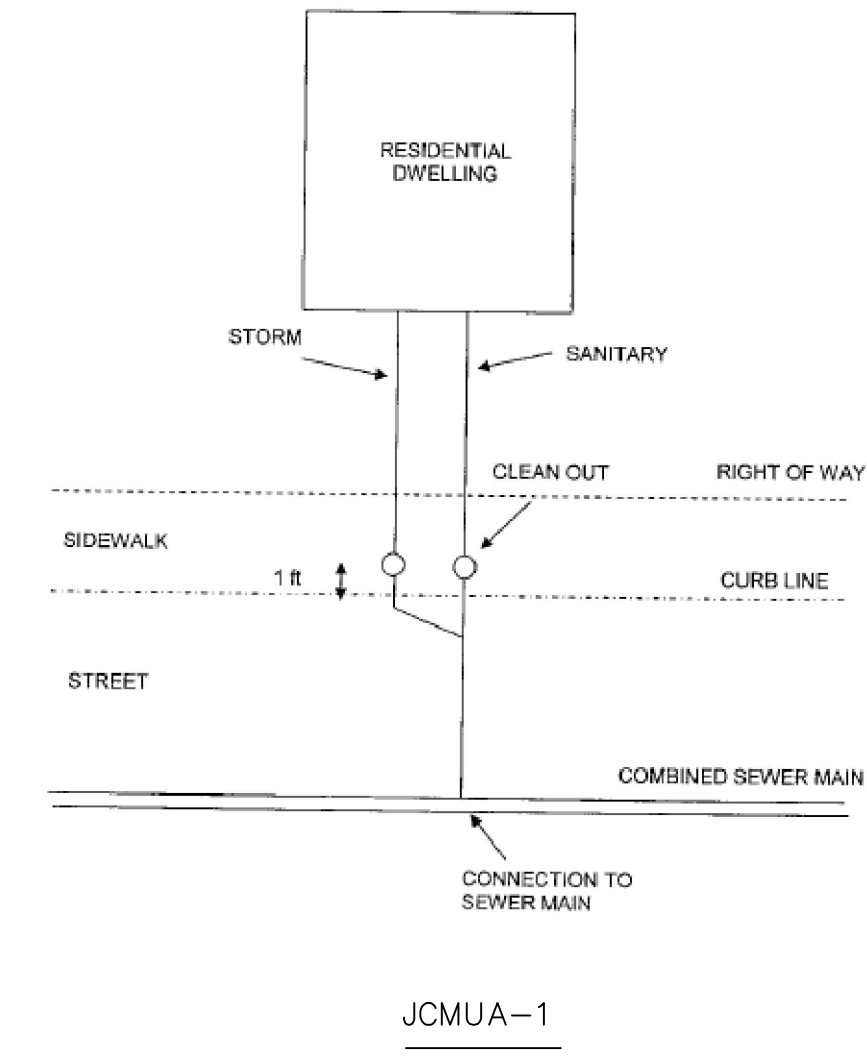
AS PER JCMUA REGULATION 0.6 GAL PER SF OF IMPERVIOUS AREA CALCULATOR ARE 2750 SFX0.6 GAL/SF =1650 GAL

NO PERC THEREFORE COLLECTION OF WATER TO RELEASE TO STREET SLOWLY

VOLUME PROVIDED BY FOR PIPE DETENTIONS:
 VOLUME OF CHAMBERS AT 48" LONGX3' DIA. EQUALING 7.1cft per ft A TOTAL OF 340CF FOR ALL 3 CHAMBERS PER ROW AT 3 ROWS. 2523 gallons



SEWER CONNECTION DETAIL FOR RESIDENTIAL DWELLING



REVISIONS:		DESCRIPTION	APPROVED
NO.	DATE		

PROJECT LOCATION:
 3447 KENNEDY BOULEVARD
 JERSEY CITY, NJ
 BLOCK: 2602 LOT: 19

PROJECT DESCRIPTION:
 DRAINAGE PLAN FOR
 NEW 3-STORY RESIDENTIAL

SEAL:
Guy Lagomarsino

DR: GJ TR: CK
 CK DES: CK
 GUY LAGOMARSINO, P.E.
 PROFESSIONAL ENGINEER
 LICENSE NO. (NJ): 246049534

SCALE:
 1" = 10'

DATE:
 MARCH 2022

C-102
 SHEET 2 OF 3

PROPOSED DRAINAGE CIVIL PLAN