

30 PARK LANE NORTH

BLOCK 7302, LOT 3.04
30 PARK LANE NORTH,
JERSEY CITY, NJ 07310

MATERIAL LOOK BOOK



Date: 04-26/2022

MINNO WASKO
ARCHITECTS AND PLANNERS
80 LAMBERT LANE, SUITE 105, LAMBERTVILLE, NEW JERSEY 08530 MINNOWASKO.COM
TWO GATEWAY CENTER, SUITE 1700, NEWARK, NEW JERSEY 07102
COPYRIGHT © MINNO & WASKO ARCHITECTS AND PLANNERS

TOWER

30 PARK LANE NORTH

BLOCK 7302, LOT 3.04
30 PARK LANE NORTH,
JERSEY CITY, NJ 07310

Date: 04-26/2022

MINNO  **WASKO**
ARCHITECTS AND PLANNERS

80 LAMBERT LANE, SUITE 105, LAMBERTVILLE, NEW JERSEY 08530 MINNOWASKO.COM
TWO GATEWAY CENTER, SUITE 1700, NEWARK, NEW JERSEY 07102

COPYRIGHT © MINNO & WASKO ARCHITECTS AND PLANNERS

TOWER



GRANITE VENEER BASE

COLOR: BLACK MEDIUM-GRAINED

TEXTURE: POLISHED STONE WITHOUT VEINING,
BULLNOSE CAP

or approved equal by Architect

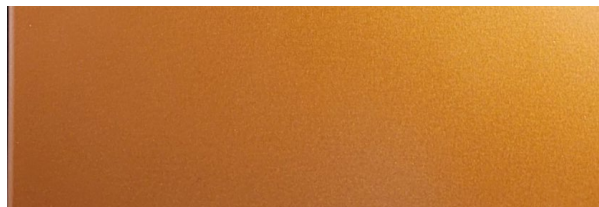


STOREFRONT BRICK

MANUFACTURER: YANKEE HILL

COLOR: CAPITOL IRONSPOT
TRADITIONAL MODULAR
SMOOTH

[HTTP://YANKEEHILLBRICK.COM/PRODUCT/CAPITAL-IRON-SPOT-FACE-BRICK/](http://yankeehillbrick.com/product/capitol-iron-spot-face-brick/)



METAL ACCENT

MANUFACTURER: RAYNOBOND

COLOR: COPPER PENNY BAMCO D-500
or approved equal by Architect



TERRACE DIVIDER FRAME

COLOR: COLOR RAL 7012 BASALT GREY

<https://mapescanopies.com/supershade/>

or approved equal by Architect



STOREFRONT & CURTAIN WALL

COLOR: RAL 7012

3 COAT FLUOROPOLYMER FINISH

<https://www.pacificclay.com/product-category/thin-brick>

or approved equal by Architect

30 PARK LANE NORTH

BLOCK 7302, LOT 3.04
30 PARK LANE NORTH,
JERSEY CITY, NJ 07310

Date: 04-26/2022

MINNO WASKO
ARCHITECTS AND PLANNERS
80 LAMBERT LANE, SUITE 105, LAMBERTVILLE, NEW JERSEY 08530 MINNOWASKO.COM
TWO GATEWAY CENTER, SUITE 1700, NEWARK, NEW JERSEY 07102
COPYRIGHT © MINNO & WASKO ARCHITECTS AND PLANNERS

TOWER



STOREFRONT & CURTAIN WALL

COLOR: RAL 7044

3 COAT FLUOROPOLYMER FINISH

<https://www.pacificclay.com/product-category/thin-brick>

or approved equal by Architect



EIFS (PRIMARY COLOR)

MANUFACTURER: SENERGY

COLOR: LONDON FOG #869

or approved equal by Architect



EIFS (SECONDARY COLOR)

MANUFACTURER: SENERGY

COLOR: STORM GREY #870

or approved equal by Architect



LOUVERS

COLOR: RAL 7012

3 COAT FLUOROPOLYMER FINISH

or approved equal by Architect



LOUVERS

COLOR: RAL 7044

3 COAT FLUOROPOLYMER FINISH

or approved equal by Architect



ALUMINUM WINDOWS

COLOR: RAL 7012

3 COAT FLUOROPOLYMER FINISH

or approved equal by Architect



ALUMINUM WINDOWS

COLOR: RAL 7044

3 COAT FLUOROPOLYMER FINISH

or approved equal by Architect

Date: 04-26/2022

30 PARK LANE NORTH

BLOCK 7302, LOT 3.04
30 PARK LANE NORTH,
JERSEY CITY, NJ 07310

MINNO WASKO
ARCHITECTS AND PLANNERS
80 LAMBERT LANE, SUITE 105, LAMBERTVILLE, NEW JERSEY 08530 MINNOWASKO.COM
TWO GATEWAY CENTER, SUITE 1700, NEWARK, NEW JERSEY 07102
COPYRIGHT © MINNO & WASKO ARCHITECTS AND PLANNERS

TOWER



METAL PANEL

MANUFACTURER: BAMCO

D 500 ROUTE AND RETURN DRY JOINT

COLOR: RAL 7012

<https://www.gobamco.com/products/fablogic/exterior-metal-panels-fablogic-d-500-2-2/>

or approved equal by Architect



BALCONY GAURDRAIL

MANUFACTURER: CR LAURENCE

COLOR: BRUSH STAINLESS FINISH

https://www.crlaurence.com/apps/contentloader/default.aspx?content=www.crlaurence.com/adv/handrailings/index_us.html

or approved equal by Architect



TERRACE DIVIDER

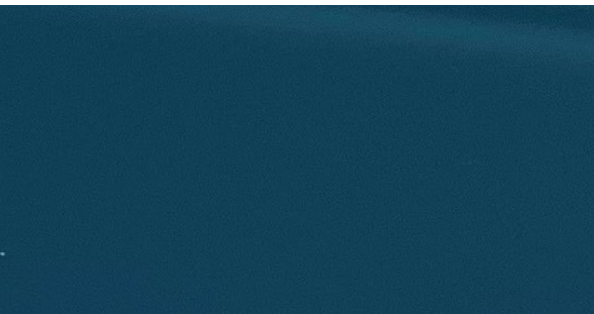
MANUFACTURER: PULP STUDIO

COLOR: TRANSLUCENT WHITE

GLASS: PRIVACY SCREEN GLASS WITH PRECISION EDGE

<https://www.pulpstudio.com/>

or approved equal by Architect



BALCONY GUARDRAIL

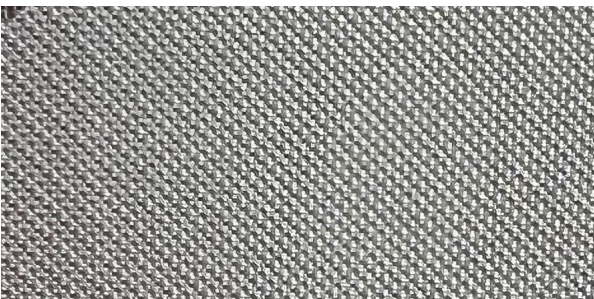
MANUFACTURER: PULP STUDIO

COLOR: ARTIC BLUE ECLIPSE

GLASS: PILKINGTON ARTIC BLUE ECLIPSE ADVANTAGE WITH PRECISION EDGE

<https://www.pulpstudio.com/>

or approved equal by Architect



ENTRANCE CANOPY

MANUFACTURER: CHROMAVISION

GLASS: REF#2169 AL MESH (ALUMINUM)

<https://www.pulpstudio.com/product/chromavision/>

or approved equal by Architect

Date: 04-26/2022

30 PARK LANE NORTH

BLOCK 7302, LOT 3.04
30 PARK LANE NORTH,
JERSEY CITY, NJ 07310

MINNO WASKO

ARCHITECTS AND PLANNERS

80 LAMBERT LANE, SUITE 105, LAMBERTVILLE, NEW JERSEY 08530 MINNOWASKO.COM

TWO GATEWAY CENTER, SUITE 1700, NEWARK, NEW JERSEY 07102

COPYRIGHT © MINNO & WASKO ARCHITECTS AND PLANNERS

TOWER



GLASS - CANOPY (RETAIL)

GLASS: CLEAR



GLASS - WINDOW (LIGHT FRAME RAL 7044)

VISION GLASS - PRIMARY

MANUFACTURER: GUARDIAN SUNGUARD

COLOR: SUPERNEUTRAL 54 - ON CLEAR 6MM/12.7
MM/6MM

or approved equal by Architect



GLASS - WINDOW (LIGHT FRAME RAL 7044)

SPANDREL GLASS

MANUFACTURER: OPACI-COAT-300

COLOR: #2 3557 FIG LEAVES - GUARDIAN SN 54 (2)
CLEAR + CLEAR

or approved equal by Architect



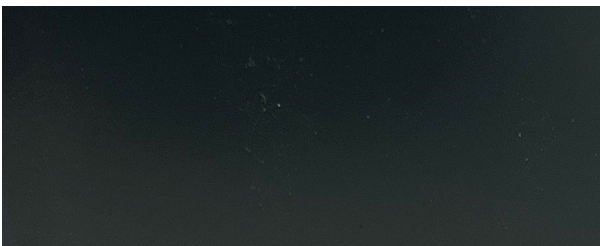
GLASS - WINDOW (DARK FRAME RAL 7012)

VISION GLASS - ACCENT

MANUFACTURER: GUARDIAN SUNGUARD

COLOR: SUPERNEUTRAL 54 - ON GREY 6MM/12.7
MM/6MM

or approved equal by Architect



GLASS - WINDOW (DARK FRAME RAL 7012)

SPANDREL GLASS

MANUFACTURER: OPACI-COAT-300

COLOR: #3 FLINT GREY - GUARDIAN SN 54 (2) GREY-
CLEAR

or approved equal by Architect

30 PARK LANE NORTH

BLOCK 7302, LOT 3.04
30 PARK LANE NORTH,
JERSEY CITY, NJ 07310

Date: 04-26/2022

MINNO WASKO

ARCHITECTS AND PLANNERS

80 LAMBERT LANE, SUITE 105, LAMBERTVILLE, NEW JERSEY 08530 MINNOWASKO.COM

TWO GATEWAY CENTER, SUITE 1700, NEWARK, NEW JERSEY 07102

COPYRIGHT © MINNO & WASKO ARCHITECTS AND PLANNERS

LINER UNITS

30 PARK LANE NORTH

BLOCK 7302, LOT 3.04
30 PARK LANE NORTH,
JERSEY CITY, NJ 07310

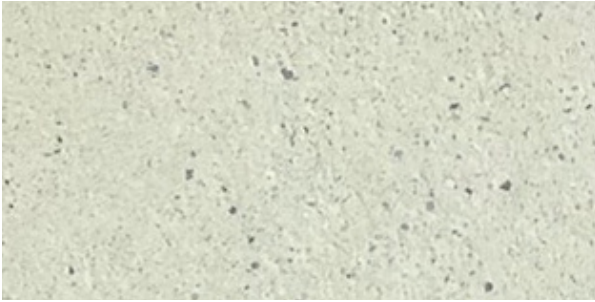
Date: 04-26/2022

MINNO  **WASKO**
ARCHITECTS AND PLANNERS

80 LAMBERT LANE, SUITE 105, LAMBERTVILLE, NEW JERSEY 08530 MINNOWASKO.COM
TWO GATEWAY CENTER, SUITE 1700, NEWARK, NEW JERSEY 07102

COPYRIGHT © MINNO & WASKO ARCHITECTS AND PLANNERS

LINER UNITS



PRECAST (PRIMARY)

COLOR: BEIGE LIGHT

TEXTURE: SANDBLASTED

[https://www.pci.org/PCI/Resources/Architectural Resources/PCI Color and Texture Selection Guide/PCI/Design Resources/Color Texture Guide/Search.aspx?hkey=32edfb71-ad32-4551-a6fa-94cfa712a522](https://www.pci.org/PCI/Resources/Architectural%20Resources/PCI%20Color%20and%20Texture%20Selection%20Guide/PCI/Design%20Resources/Color%20Texture%20Guide/Search.aspx?hkey=32edfb71-ad32-4551-a6fa-94cfa712a522)

or approved equal by Architect



PRECAST

COLOR: FIELD IN GREY LIGHT

TEXTURE: SANDBLASTED

[https://www.pci.org/PCI/Resources/Architectural Resources/PCI Color and Texture Selection Guide/PCI/Design Resources/Color Texture Guide/Search.aspx?hkey=32edfb71-ad32-4551-a6fa-94cfa712a522](https://www.pci.org/PCI/Resources/Architectural%20Resources/PCI%20Color%20and%20Texture%20Selection%20Guide/PCI/Design%20Resources/Color%20Texture%20Guide/Search.aspx?hkey=32edfb71-ad32-4551-a6fa-94cfa712a522)

or approved equal by Architect



BRICK

MANUFACTURER: PACIFIC CLAY

COLOR: SALTILLO 158 VARIEGATED
THIN MODULAR

<https://www.pacificclay.com/product-category/thin-brick>

or approved equal by Architect

30 PARK LANE NORTH

BLOCK 7302, LOT 3.04
30 PARK LANE NORTH,
JERSEY CITY, NJ 07310

Date: 04-26/2022

MINNO WASKO

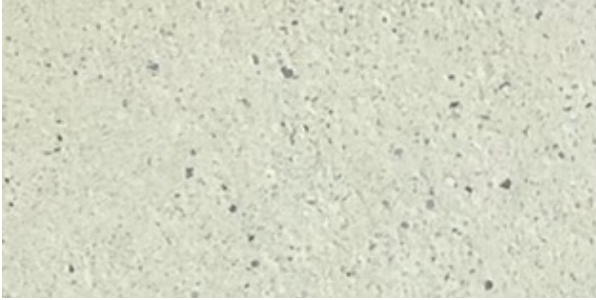
ARCHITECTS AND PLANNERS

80 LAMBERT LANE, SUITE 105, LAMBERTVILLE, NEW JERSEY 08530 MINNOWASKO.COM

TWO GATEWAY CENTER, SUITE 1700, NEWARK, NEW JERSEY 07102

COPYRIGHT © MINNO & WASKO ARCHITECTS AND PLANNERS

LINER UNITS



CAST STONE

MANUFACTURER: CAST STONE FORM LINER

COLOR: BEIGE LIGHT

or approved equal by Architect



SUNSHADES

COLOR: RAL 7012

<https://mapescanopies.com/supershade/>

or approved equal by Architect



STOREFRONT

COLOR: RAL 7012

3 COAT FLUOROPOLYMER FINISH

or approved equal by Architect



LOUVERS

COLOR: RAL 7012

3 COAT FLUOROPOLYMER FINISH

or approved equal by Architect



WINDOWS

COLOR: RAL 7012

3 COAT FLUOROPOLYMER FINISH

or approved equal by Architect

30 PARK LANE NORTH

BLOCK 7302, LOT 3.04
30 PARK LANE NORTH,
JERSEY CITY, NJ 07310

Date: 04-26/2022

MINNO WASKO

ARCHITECTS AND PLANNERS

80 LAMBERT LANE, SUITE 105, LAMBERTVILLE, NEW JERSEY 08530 MINNOWASKO.COM

TWO GATEWAY CENTER, SUITE 1700, NEWARK, NEW JERSEY 07102

COPYRIGHT © MINNO & WASKO ARCHITECTS AND PLANNERS

GARAGE

30 PARK LANE NORTH

BLOCK 7302, LOT 3.04
30 PARK LANE NORTH,
JERSEY CITY, NJ 07310

Date: 04-26/2022

MINNO  **WASKO**
ARCHITECTS AND PLANNERS

80 LAMBERT LANE, SUITE 105, LAMBERTVILLE, NEW JERSEY 08530 MINNOWASKO.COM
TWO GATEWAY CENTER, SUITE 1700, NEWARK, NEW JERSEY 07102

COPYRIGHT © MINNO & WASKO ARCHITECTS AND PLANNERS

GARAGE

PRECAST



COLOR: 609 CHARCOAL GREY , CONCRETE COLOR LIGHT

TEXTURE: ACID ETCHED

https://www.pci.org/PCI/Resources/Architectural_Resources/PCI_Color_and_Texture_Selection_Guide/PCI/Design_Resources/Color_Texture_Guide/Search.aspx?hkey=32edfb71-ad32-4551-a6fa-94cfa712a522

or approved equal by Architect

BRICK



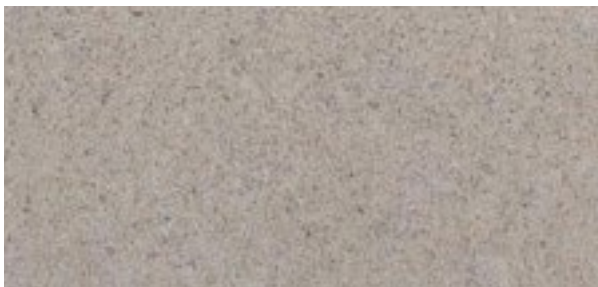
MANUFACTURER: PACIFIC CLAY

COLOR: SALTILLO 158 VARIEGATED
THIN MODULAR

<https://www.pacificclay.com/product-category/thin-brick>

or approved equal by Architect

CAST STONE



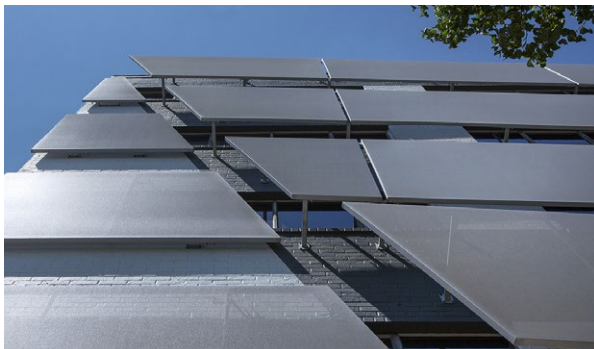
MANUFACTURER: CORINTHIAN CAST STONE

COLOR: ROSE

<https://corinthiancaststone.com/colors/>

or approved equal by Architect

GARAGE SCREENS



MANUFACTURER: FLEX FACADES MODULAR PANEL
SCREENS (ALUMINUM PANELIZED FRAMES + STEEL
CLIP ANGLES)

PATTERN: WAVE PATTERN PRINT

<https://flexfacades.com/solutions/modular-panel-screens/>

or approved equal by Architect

UTILITY DOORS

COLOR: PAINT TO MATCH

Date: 04-26/2022

30 PARK LANE NORTH

BLOCK 7302, LOT 3.04
30 PARK LANE NORTH,
JERSEY CITY, NJ 07310

MINNO WASKO
ARCHITECTS AND PLANNERS
80 LAMBERT LANE, SUITE 105, LAMBERTVILLE, NEW JERSEY 08530 MINNOWASKO.COM
TWO GATEWAY CENTER, SUITE 1700, NEWARK, NEW JERSEY 07102
COPYRIGHT © MINNO & WASKO ARCHITECTS AND PLANNERS