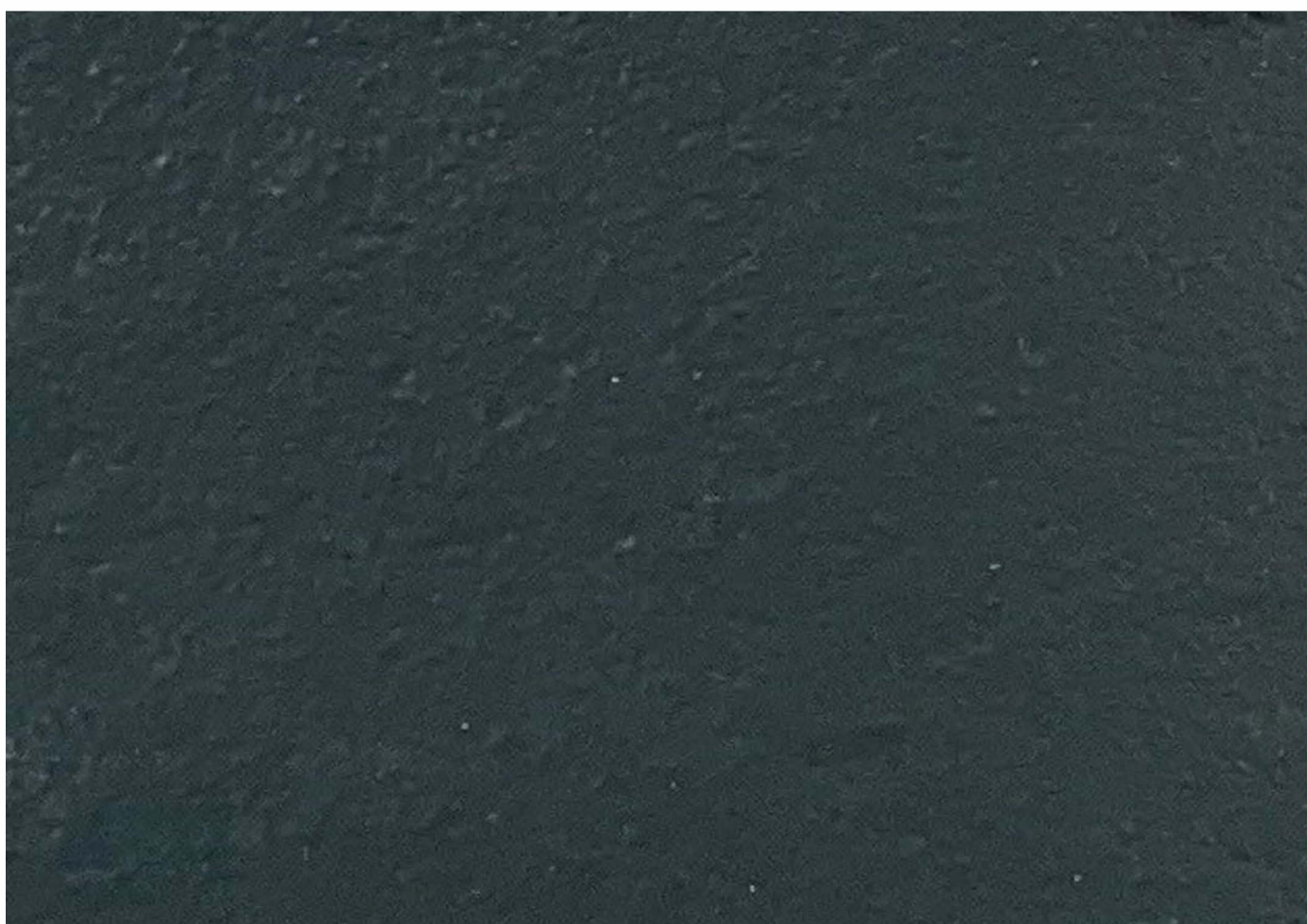




A. Brick Veneer
Sioux City Brick
Mountain Shadow Tuscan



B. Aluminum Composite Panels
Omega Panel
Champagne



C. & D. Cement Board
Hardie Board
Iron Gray



E. Composite Panels
Omega Panel
Warm Cherry



F. Finished Block
Trenwyth Masonry Block
Rhine Grey Textured



J. Custom Cast Stone
Arcustone
Limestone Coating



G., H., & K.
Dark Bronze Fascia/Frame

EXTERIOR MATERIALS LEGEND	
<div>A</div>	BRICK VENEER: STONE TEK, SIOUX CITY BRICK THIN BRICK, MOUNTAIN SHADOW TUSCAN (OR APPROVED EQUAL) INSTALL AS PER MFG'S SPECS.
<div>B</div>	ALUMINUM COMPOSITE PANELS: OMEGA PANEL PRODUCTS LAMINATORS OMEGA-LITE PANELS, CLIP&CAULK. COLOR: CHAMPAGNE (OR APPROVED EQUAL) INSTALL AS PER MFG'S SPECS.
<div>C</div>	HARDIE PANEL CEMENT BOARD WITH 3" BATTENS COLOR: IRON GRAY INSTALL AS PER MFG'S SPECS.
<div>D</div>	HARDIE PANEL PLANK SIDING COLOR: IRON GRAY INSTALL AS PER MFG'S SPECS.
<div>E</div>	WOOD GRAIN FINISH OF COMPOSITE PANELS: OMEGA PANEL PRODUCTS LAMINATORS OMEGA-LITE PANELS, CLIP&CAULK. WARM CHERRY (OR APPROVED EQUAL) INSTALL AS PER MFG'S SPECS.
<div>F</div>	FINISHED BLOCK: TRENWYTH MASONRY BLOCK RHINE GREY TEXTURED (OR APRVD EQ.) INSTALL AS PER MFG'S SPECS.
<div>G</div>	DARK BRONZE ALUMINUM FASCIA
<div>H</div>	KAWNEER CURTAINWALL GLAZING SYSTEM IN BRONZE FRAME
<div>I</div>	FROSTED GLASS PANEL GUARD RAIL
<div>J</div>	ARCUSTONE: CUSTOM CAST STONE UNITS LIMESTONE COATING OVER CUSTOM SHAPE BACKING SUBSTRATE.
<div>K</div>	WINDOWS: MARVIN ELEVATE SERIES BRONZE FRAME
SCONES/ DOWNLIGHT: KIM LIGHTING WD14	

NOT FOR CONSTRUCTION UNLESS SIGNED & SEALED BY
ARCHITECT & APPROVED BY ALL AGENCIES HAVING
JURISDICTION

USE OF THIS DESIGN OR DISSEMINATION IS PROHIBITED WITHOUT PRIOR WRITTEN
CONSENT OF THE ARCHITECT. ALL COMMON LAW RIGHTS OF COPYRIGHT AND
OTHERWISE ARE SPECIFICALLY RESERVED. DRAWINGS ARE NOT FOR
PROTOTYPICAL USE. MONTEFORTE ARCHITECTURAL STUDIO, LLC. © 2022

MONTEFORTE

ARCHITECTURAL STUDIO, LLC

JAMES J. MONTEFORTE, AIA

783 HIGHWAY 35, SUITE C OCEAN, NJ 07712 (732) 988-1900

PROPOSED MIX USE BUILDING FOR

END JC HOLDINGS LLC

385-387 COMMUNIPAW, JC NJ

LOTS 36 & 37

BLOCK 20102

REVISIONS:	
DATE:	
DRAWN BY:	JJM
CHECKED BY:	JJM
JOB NO.	12019
DATE:	5-6-19

10 OF 10

DWG. NO.