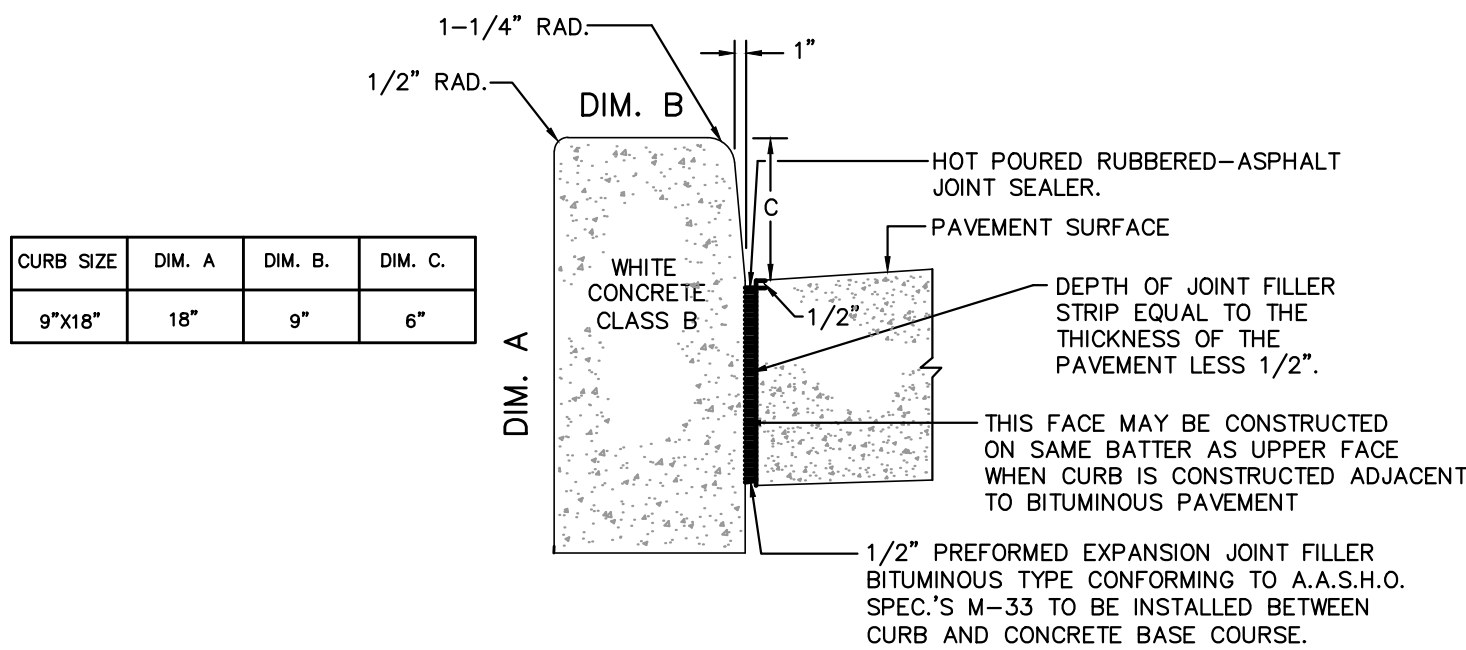
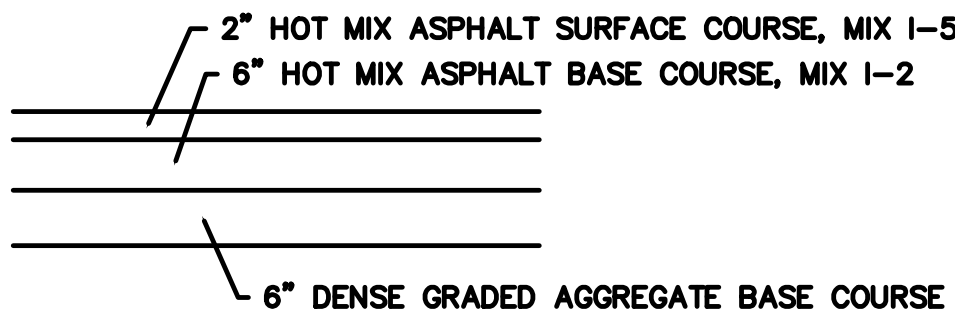


4" THICK CONCRETE SIDEWALK
NOT TO SCALE

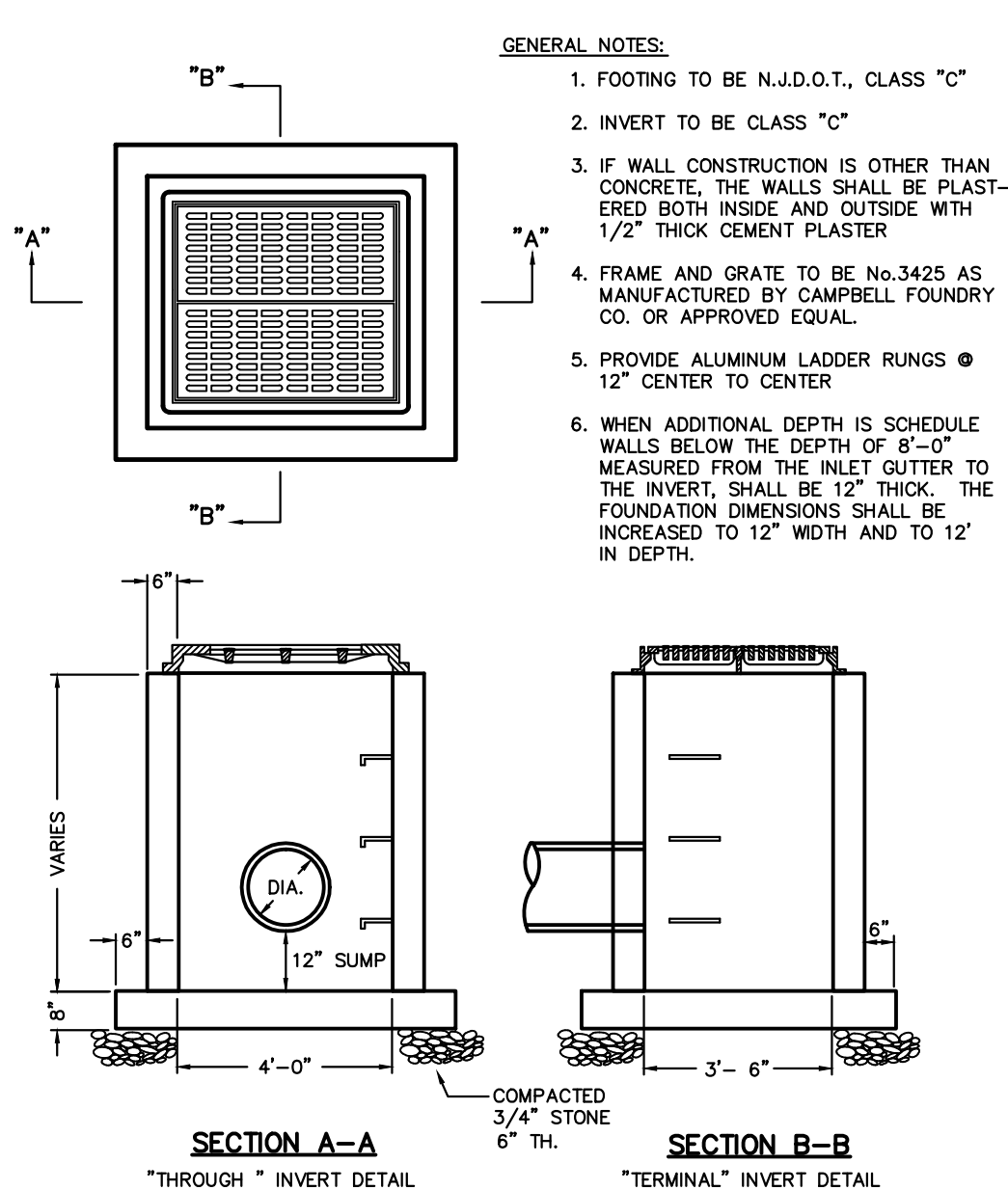


TRANSVERSE JOINTS 1/2" WIDE SHALL BE INSTALLED IN THE CURB 20'-0" APART AND SHALL BE FILLED WITH PREFORMED BITUMINOUS-IMPREGNATED FIBER JOINT FILLER COMPLYING WITH THE REQUIREMENTS OF A.A.S.H.T.O. SPEC. M-213, RECESSED 1/4" IN FROM FRONT FACE AND TOP OF CURB. EXPANSION JOINTS THRU AND ADJACENT TO THE CURB SHALL BE INCLUDED IN THE UNIT PRICE BID FOR CURB.

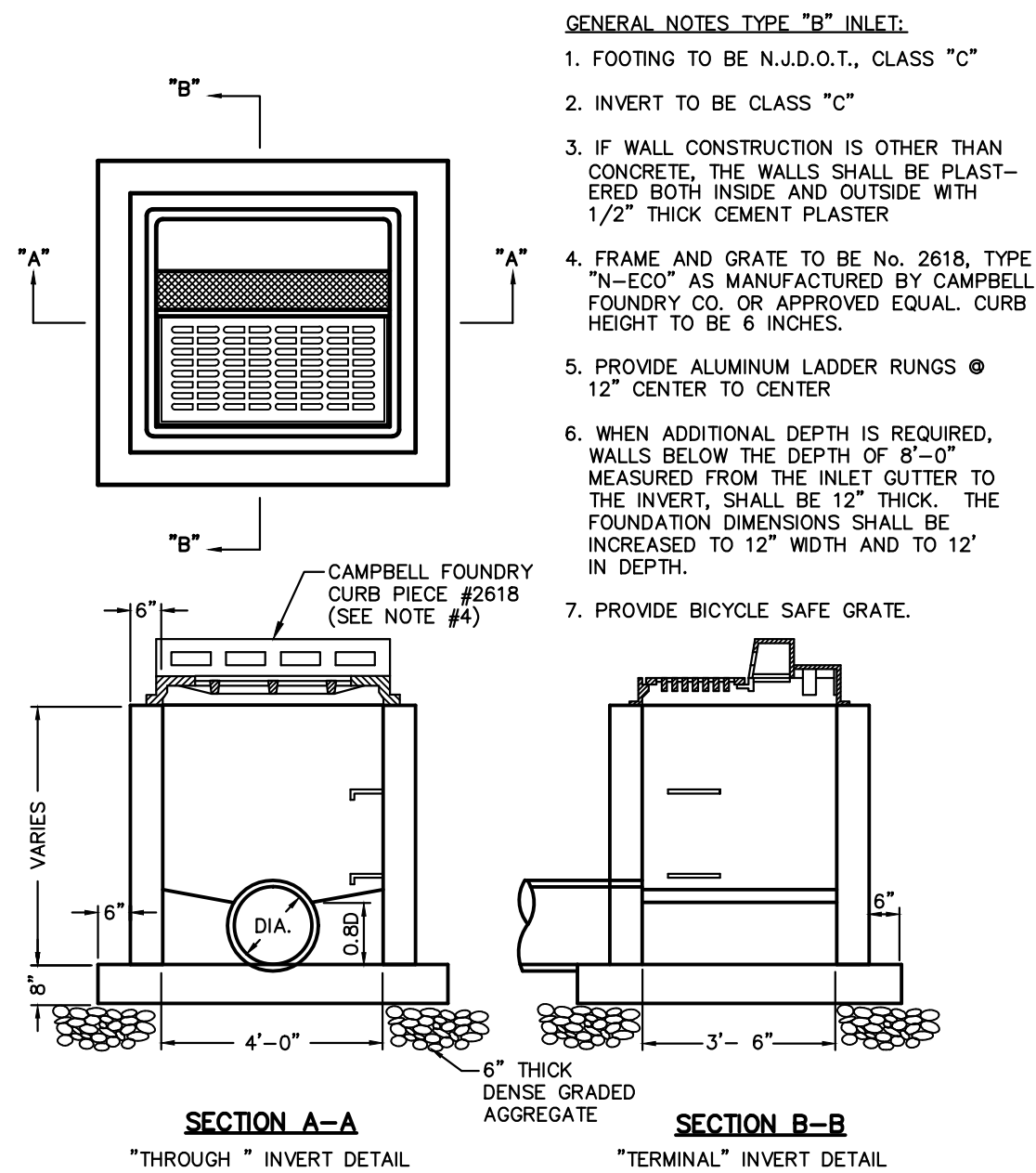
9"x18"x6" CONCRETE VERTICAL CURB
N.T.S.



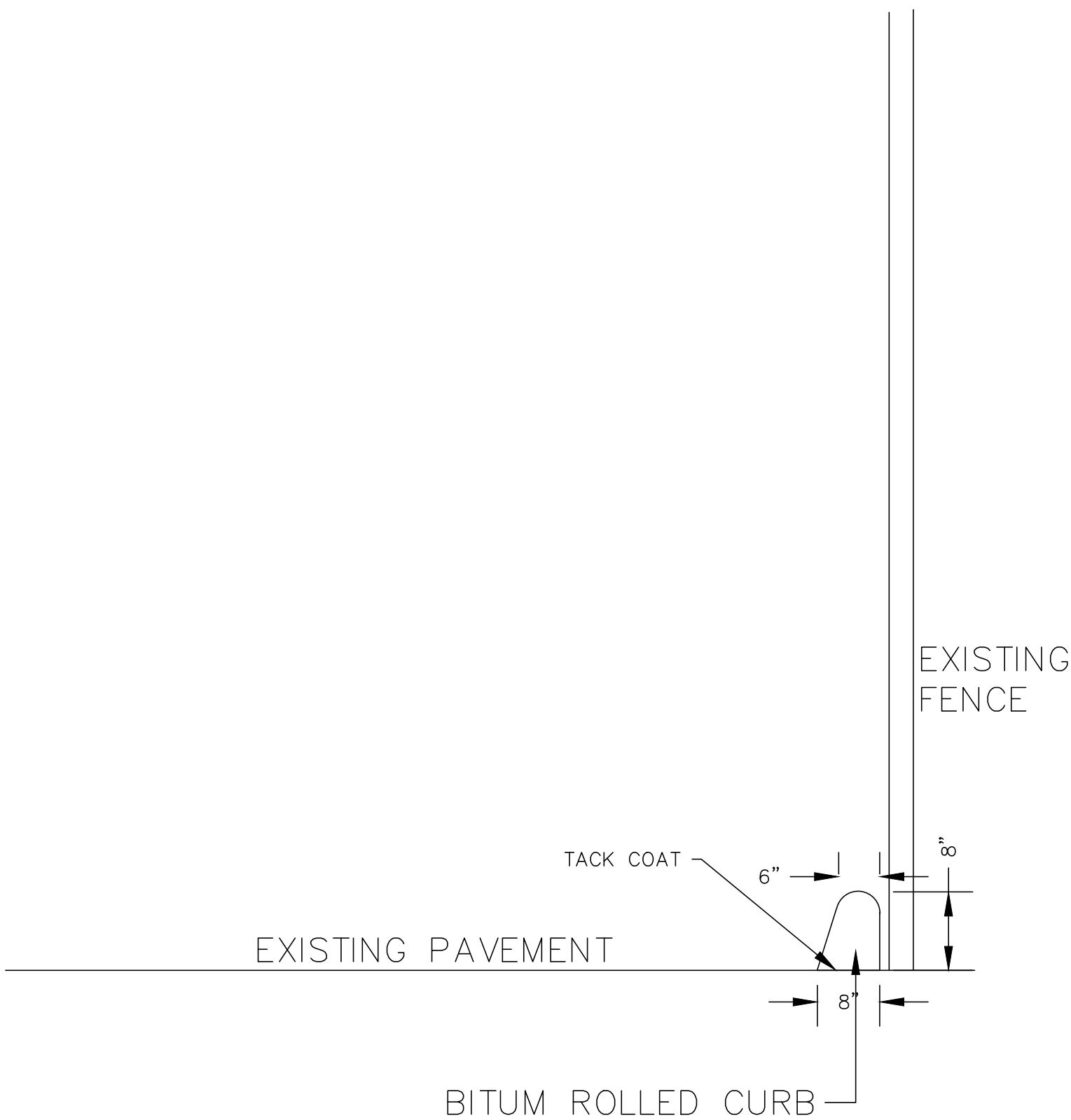
PAVEMENT RESTORATION



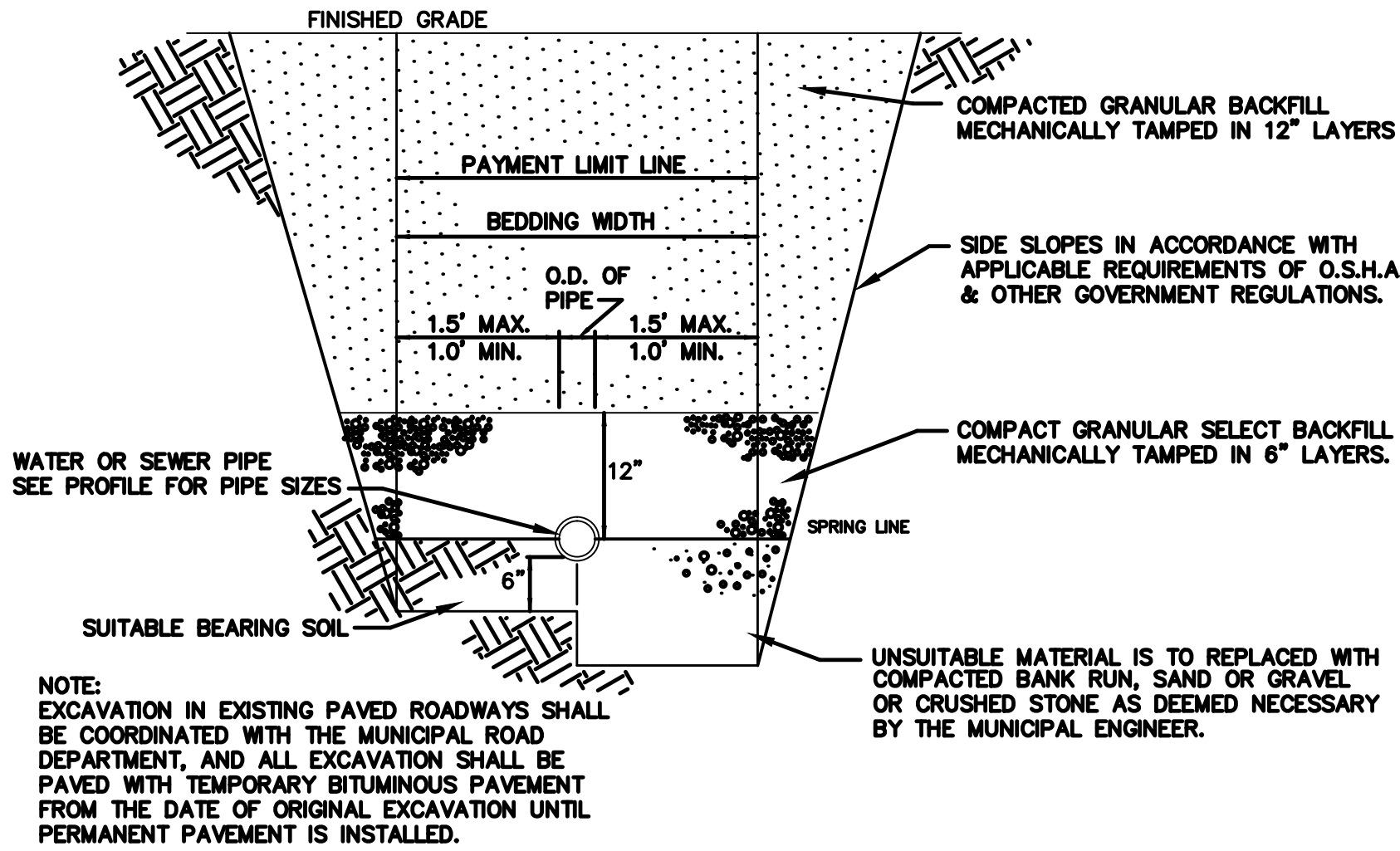
TYPE "E" INLET
WITH BICYCLE GRATE



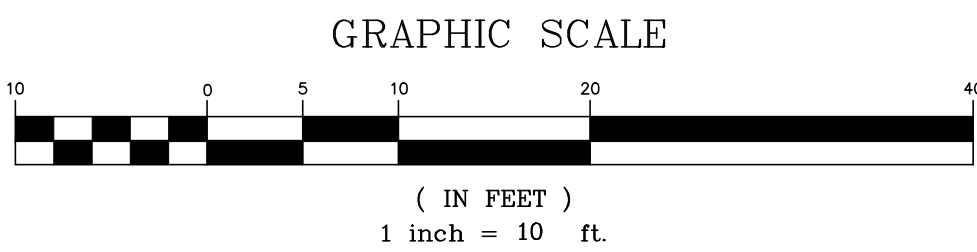
TYPE "B" INLET
NOT TO SCALE



6" BITUM. ROLLED CURB



PIPE BEDDING DETAIL
N.T.S.



DATE	REVISIONS	MADE	FILE NO.	2020-23
			DATE:	APR. 21, 2020
			SCALE:	1"=10'
			DRAWN BY:	GRG
			CHECKED BY:	GRG
			DRAWING NO.	676GARFIELD
			SHEET NO.	2 OF 2

CONSTRUCTION DETAILS
676 GARFIELD AVENUE
BLOCK 23704 LOT 1
CITY OF JERSEY CITY, HUDSON COUNTY, NEW JERSEY
G. Gloede and Associates
POST OFFICE BOX 449, OAK RIDGE, NEW JERSEY 07038, (973)697-9247
GEORGE R. GLOEDE JR.
Professional Engineer Lic. No. 32407

NOT VALID WITHOUT RAISED SEAL