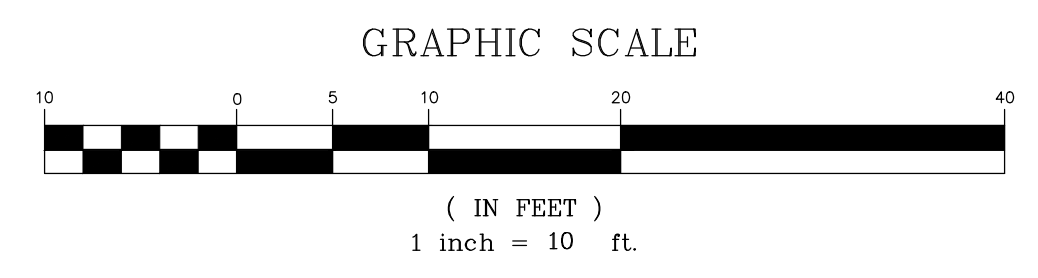
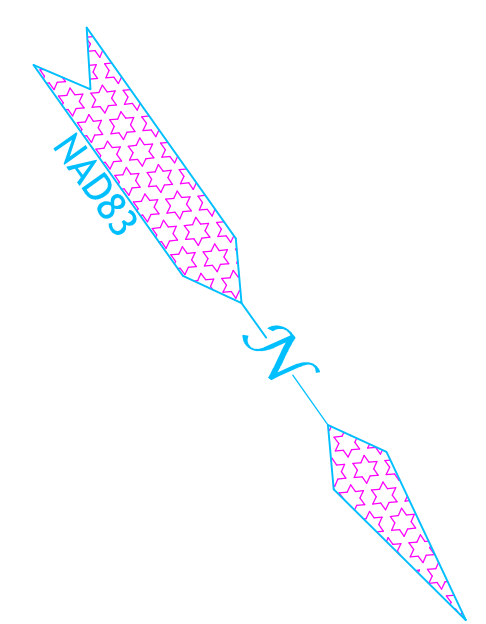
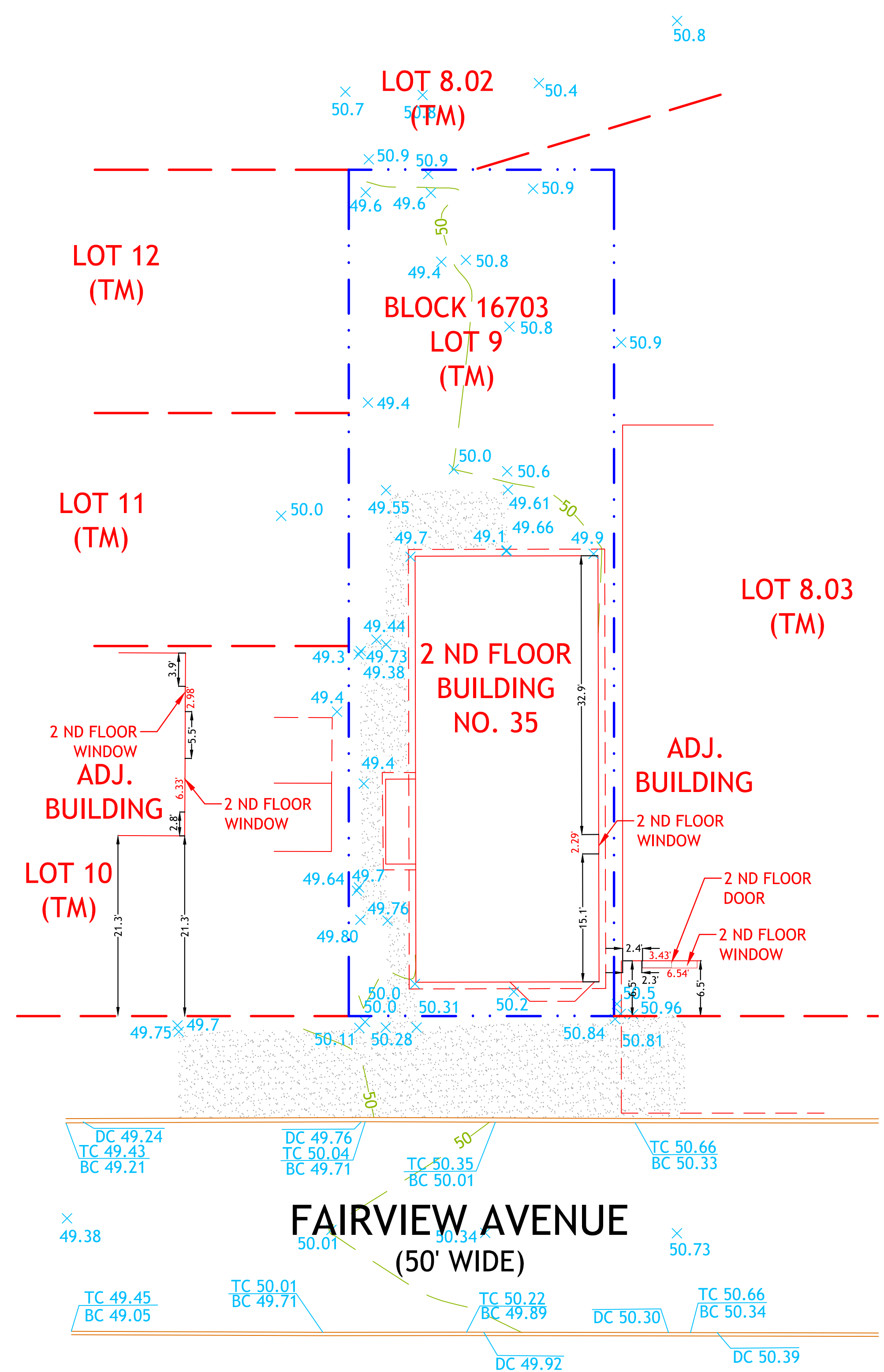
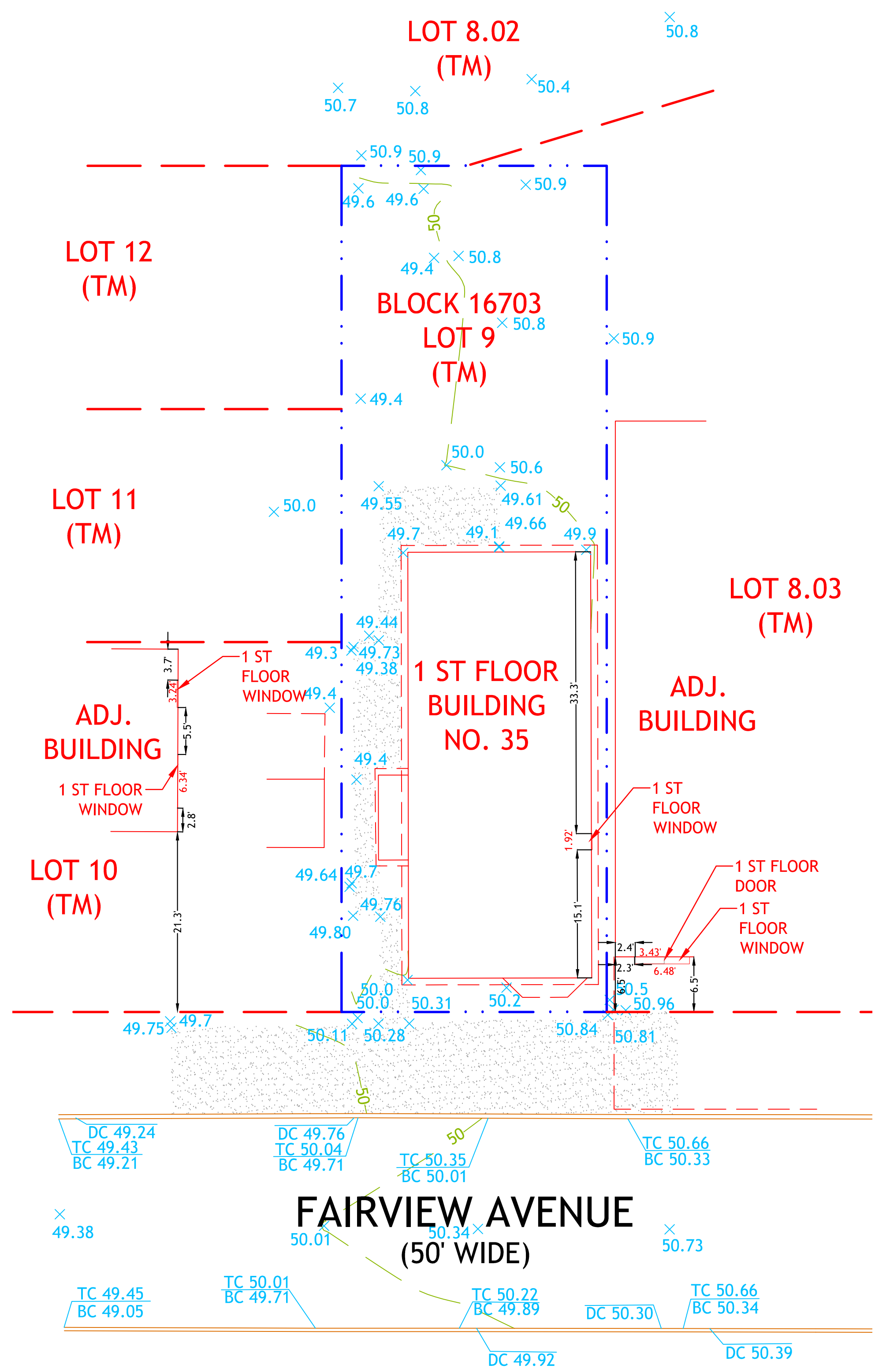


\* A WRITTEN WAIVER AND DIRECTION NOT TO SET CORNER MARKERS HAS BEEN OBTAINED FROM THE ULTIMATE USER PURSUANT TO P.L.2003, C.14 (C45:8-36.3) AND NJAC 13:40-5.1 (D)\*



	<b>CLEARPOINT SERVICES LLC</b> Professional Land Surveyors		OUTBOUND & TOPOGRAPHIC SURVEY WINDOW PROFILE PREPARED FOR <b>35 FAIRVIEW AVENUE</b> <b>-LOT 9 - BLOCK 16703-</b> SITUATED IN THE CITY OF JERSEY CITY, HUDSON COUNTY, NEW JERSEY	
	ALAN R. BOETTGER PROFESSIONAL LAND SURVEYOR N.J. LICENSE NO. 41997	JOB NO. 23-35272-01	SCALE 1"=10'	DATE: 06-06-2023